



Emotion
APPAREL, INC.
SPRING 2014



[PA1004] Palazzo Pant in Azure, Blue Eyes & Safari Gray \$59 (5/1/14)
[TA1007] Scoop Neck Top in Azure (long - can be worn as a tunic) \$40 (5/1/14)
[VA1002] Versatile Vest in Azure, Blue Eyes & Safari Gray \$60 (5/1/14)
(Additional Colors Available Pg.44-45)



[PA1004] Palazzo Pants in Elephant Gray, Safari Gray & Seaglass \$59 (3/15/14)
[TA1007] Scoop Neck Top in Seaglass (long - can be worn as a tunic) \$40 (3/15/14)
[VA1002] Versatile Vest in Elephant Gray, Safari Gray & Seaglass \$60 (3/15/14)
(Additional Colors Available Pg.44-45)



[PA1004] Palazzo Pant in Black, Safari Gray & Charcoal Ash \$59 (2/1/14)

[TA3003] Cold Shoulder Top in Black \$38 (2/1/14)

(Additional Colors Available Pg.44-45)



[PA1004] Palazzo Pant in Black \$59 (3/15/14)
[TA1007] Scoop Neck Top in White \$40 (year round)
[VA1002] Versatile Vest in Black, Watermelon & Charcoal Ash \$60 (3/15/14)
(Additional Colors Available Pg.44-45)



[SA2002] Fishtail Maxi Skirt in Azure, Blue Eyes & Safari Gray \$55 (5/1/14)
[TA3003] Cold Shoulder Top in Azure \$38 (5/1/14)
(Additional Colors Available Pg.44-45)



[SA2002] Fishtail Maxi Skirt in Elephant Gray, Safari Gray & Seaglass \$55 (3/15/14)

[TA3003] Cold Shoulder Top in Seaglass \$38 (3/15/14)

(Additional Colors Available Pg.44-45)



[SA2002] Fishtail Maxi Skirt in Black, Safari Gray & Charcoal Ash \$55 (2/1/14)

[TA3003] Cold Shoulder Top in White \$38 (year round)

[VA1002] Versatile Vest in Black, Safari Gray & Charcoal Ash \$60 (2/1/14)

(Additional Colors Available Pg.44-45)



[SA1001] Foldover Maxi Skirt in Azure, Blue Eyes & Safari Gray \$52 [5/1/14]

[TA1007] Scoop Neck Top in Blue Eyes \$40 [5/1/14]

(Additional Colors Available Pg.44-45)

[SA1001] Foldover Maxi Skirt in Black, Safari Gray & Charcoal Ash \$52 [3/15/14]

Cold Shoulder Top in White \$38 [year-round]

(Additional Colors Available Pg.44-45)



[DA1010] Racerback Maxi Dress in Elephant Gray, Safari Gray & Seaglass \$79 [3/15/14]
[VA1002] Versatile Vest in Elephant Gray, Safari Gray & Seaglass \$60 [3/15/14]
(Additional Colors Available Pg.44-45)



[DA1010]
Racerback Maxi Dress in
Black, Safari Gray &
Charcoal Ash \$79 (2/1/14)

[VA1002]
Versatile Vest in Black,
Safari Gray & Charcoal Ash
\$60 (2/1/14)

(Additional Colors Available
Pg.44-45)



[DA1009] Bandeau Maxi Dress in Navy, Soft Orange & Elephant Gray \$69 (3/15/14)

[VA1002] Versatile Vest in Navy, Soft Orange & Elephant Gray \$60 (3/15/14)

(Additional Colors Available Pg.44-45)



[DA1009] Bandeau Maxi Dress in Elephant Gray,
Safari Gray & Seaglass \$69 (3/15/14)
(Additional Colors Available Pg.44-45)



[DA2005]
3/4-Sleeve Maxi Dress
in Soft Orange, Melon
& Peach \$62 (5/1/14)

(Additional Colors Available
Pg.44-45)



[DA2005] 3/4-Sleeve Maxi Dress in Black, Watermelon & Peach \$62 (3/15/14)
(Additional Colors Available Pg.44-45)



[DA2005] 3/4-Sleeve Maxi Dress in Hyacinth, Mint & Robin Egg \$62 (3/15/14)
(Additional Colors Available Pg.44-45)



[DA1001] Knott Maxi Dress in Soft Orange, Light Melon & Peach \$62 (2/1/14)
(Additional Colors Available Pg.44-45)



[DA1001] Knott Maxi Dress in Black, Watermelon & Peach \$62 (3/15/14)
(Additional Colors Available Pg.44-45)



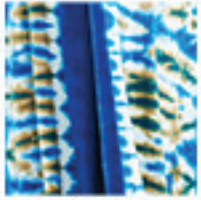
[DA1001] Knott Maxi Dress in Hyacinth, Mint and Robin Egg \$62 (5/1/14)
(Additional Colors Available Pg.44-45)



[DA1011] Mini Tank Dress in Watermelon, Soft Orange & Peach \$69 (5/1/14)
(Additional Colors Available Pg.44-45)



[DA1011] Mini Tank Dress in Navy, Mint & Daffodil \$69 (2/1/14)
(Additional Colors Available Pg.44-45)



Azure, Blue Eyes
& Safari Gray



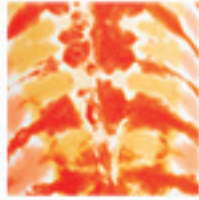
Elephant Gray, Safari
Gray & Seaglass



Black, Safari Gray
& Charcoal Ash



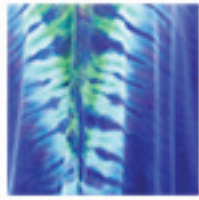
Navy, Soft Orange
& Elephant Gray



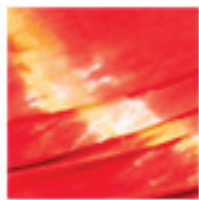
Soft Orange, Light Melon
& Peach



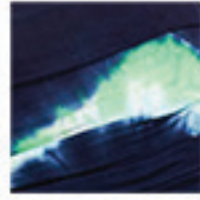
Black, Watermelon
& Peach



Hyacinth, Mint
& Robin Egg



Watermelon, Soft Orange
& Peach



Navy, Mint & Daffodil



Azure



Seaglass



Blue Eyes



White



Safari Gray



Black

[TA1007] SCOOP NECK TOP

This top has a relaxed fit, 3/4-length sleeves and can be worn off the shoulder and as a tunic.

Available in:

Solid Azure - Pg.2-3 (5/1/14)
 Solid Seaglass - Pg.4 (3/15/14)
 Solid Black - See Swatch (3/15/14)
 Solid White - Pg.8-9 (year round)
 Solid Blue Eyes - Pg.16-17 (5/1/14)
 Safari Gray - See Swatch (2/1/14)

[TA3003] COLD SHOULDER TOP

This top is slightly different than pictured. The sleeves will be open at the seam from shoulder to wrist, for a sexy yet soft silhouette.

Available in:

Solid Azure - Pg.10-11 (5/1/14)
 Solid Seaglass - Pg.12-13 (3/15/14)
 Solid Black - Pg.6-7 (3/15/14)
 Solid White - Pg.14-15 (year round)
 Solid Blue Eyes - See Swatch (5/1/14)
 Safari Gray - See Swatch (2/1/14)

[PA1004] PALAZZO PANT

These comfy and attractive pants have a 10" foldover waistband, and no-fray hems for cutting to desired length.

Available in:

Solid White - See Swatch (year round)
 Azure, Blue Eyes & Safari Gray
 Pg.2-3 (5/1/14)
 Elephant Gray, Safari Gray & Seaglass
 Pg.4-5 (3/15/14)
 Black, Safari Gray & Charcoal Ash
 Pg.6-7 (2/1/14)
 Solid Black - Pg.8-9 (3/15/14)

[SA2002] FISHTAIL MAXI SKIRT

This maxi has a pencil-skirt shape and a fishtail hemline and can be worn as a dress or skirt.

Available in:

Azure, Blue Eyes & Safari Gray
 Pg.10-11 (2/1/14)
 Elephant Gray, Safari Gray & Seaglass
 Pg.12-13 (2/1/14)
 Black, Safari Gray & Charcoal Ash
 Pg.14-15 (2/1/14)

[SA1001] FOLDOVER MAXI SKIRT

This maxi has a full skirt, comfortable foldover waistband and a no-fray hem for cutting to desired length.

Available in:

Azure, Blue Eyes & Safari Gray
 Pg.16-17 (5/1/14)
 Black, Safari Gray & Charcoal Ash
 Pg.17 (2/1/14)
 Elephant Gray, Safari Gray & Seaglass
 See Swatch (3/15/14)

[DA1010] RACERBACK MAXI DRESS

Classic racerback cut with pleated sides for a slim and forgiving fit.

Available in:

Elephant Gray, Safari Gray & Seaglass
 Pg.18-19 (3/15/14)
 Black, Safari Gray & Charcoal Ash
 Pg.20-21 (2/1/14)
 Navy, Soft Orange & Elephant Gray
 See Swatch (3/15/14)

[DA1009] BANDEAU MAXI DRESS

A built-in reversible second layer of fabric allows you to adjust the length of this comfy and versatile dress.

Available in:

Navy, Soft Orange & Elephant Gray
 Pg.22-23 (3/15/14)
 Elephant Gray, Safari Gray & Seaglass
 Pg.24-25 (2/1/14)

[DA2005] 3/4 SLEEVE MAXI DRESS

With a scoop neck, 3/4-length sleeves and a relaxed fit, this is the perfect t-shirt-style maxi.

Available in:

Soft Orange, Light Melon & Peach
 Pg.26-27 (5/1/14)
 Black, Light Melon & Soft Orange
 Pg.28-29 (2/1/14)
 Hyacinth, Mint & Robin Egg
 Pg.30-31 (3/15/14)

[DA1001] KNOTT MAXI DRESS

An A-line maxi with an empire waist. Tie front adjusts to be worn multiple ways, including as a skirt. Unfinished no-fray hem for cutting to desired length.

Available in:

Soft Orange, Light Melon & Peach
 Pg.32-33 (2/1/14)
 Black, Light Melon & Soft Orange
 Pg.34-35 (3/15/14)
 Hyacinth, Mint and Robin Egg
 Pg.36-37 (5/1/14)

[DA1011] MINI TANK DRESS

Classic racerback cut with pleated sides for a slim and forgiving fit. Can be worn as a dress or tunic.

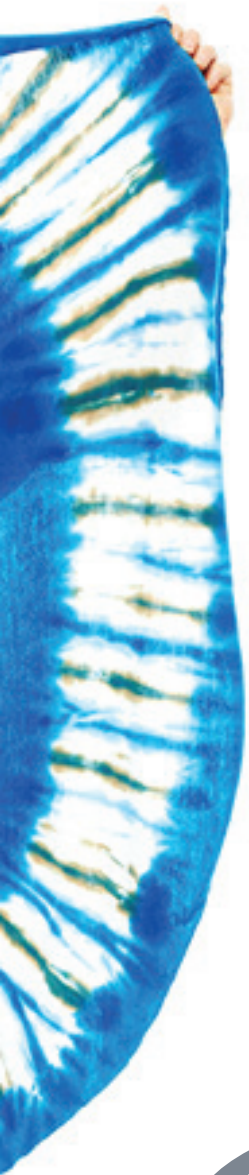
Available in:

Watermelon, Soft Orange & Peach
 Pg.38-39 (5/1/14)
 Navy, Mint & Daffodil - Pg.40-41 (2/1/14)
 Hyacinth, Mint & Robin Egg
 See Swatch (3/15/14)

[VA1002] VERSATILE VEST

Available in:

Azure, Blue Eyes & Safari Gray
 Pg.2-3 (5/1/14)
 Elephant Gray, Safari Gray & Seaglass
 Pg.5, Pg.19 (3/15/14)
 Black, Watermelon & Charcoal Ash
 Pg.8-9 (3/15/14)
 Black, Safari Gray & Charcoal Ash
 Pg.14-15, Pg.21 (2/1/14)
 Navy, Soft Orange & Elephant Gray
 Pg.22-23 (3/15/14)



Emotion
APPAREL, INC.

www.EmotionApparelInc.com